

2013. Company Overview





CONTENTS

1. About Company

- 1) COMPANY PROFILE
- 2) HISTORY
- 3) BUSINESS LINE
- 4) Factory Layout
- 5) EQUIPMENTS

2. Business Area

- 1) Main & Auxiliary Engines Spares
- 2) Purifier Production
- 3) Spares for most common marine pumps
- 4) SAFETY EQUIPMENT
- 5) Ship Repair



1. About Company



1) Company Profile

The responsibility, duty, and action towards the customers are the prides of POKO.

ESTABLISHMENT YEAR	November, 2010
CEO	GW-DONG, KIM
PERSONNEL	18Persons January, 2013 Currently
LOCATION	No.21, Gamcheonhang-ro 405-gil, Saha-gu, Busan, Korea.
BUILDING AREA	5,692.7m ²



1. About Company



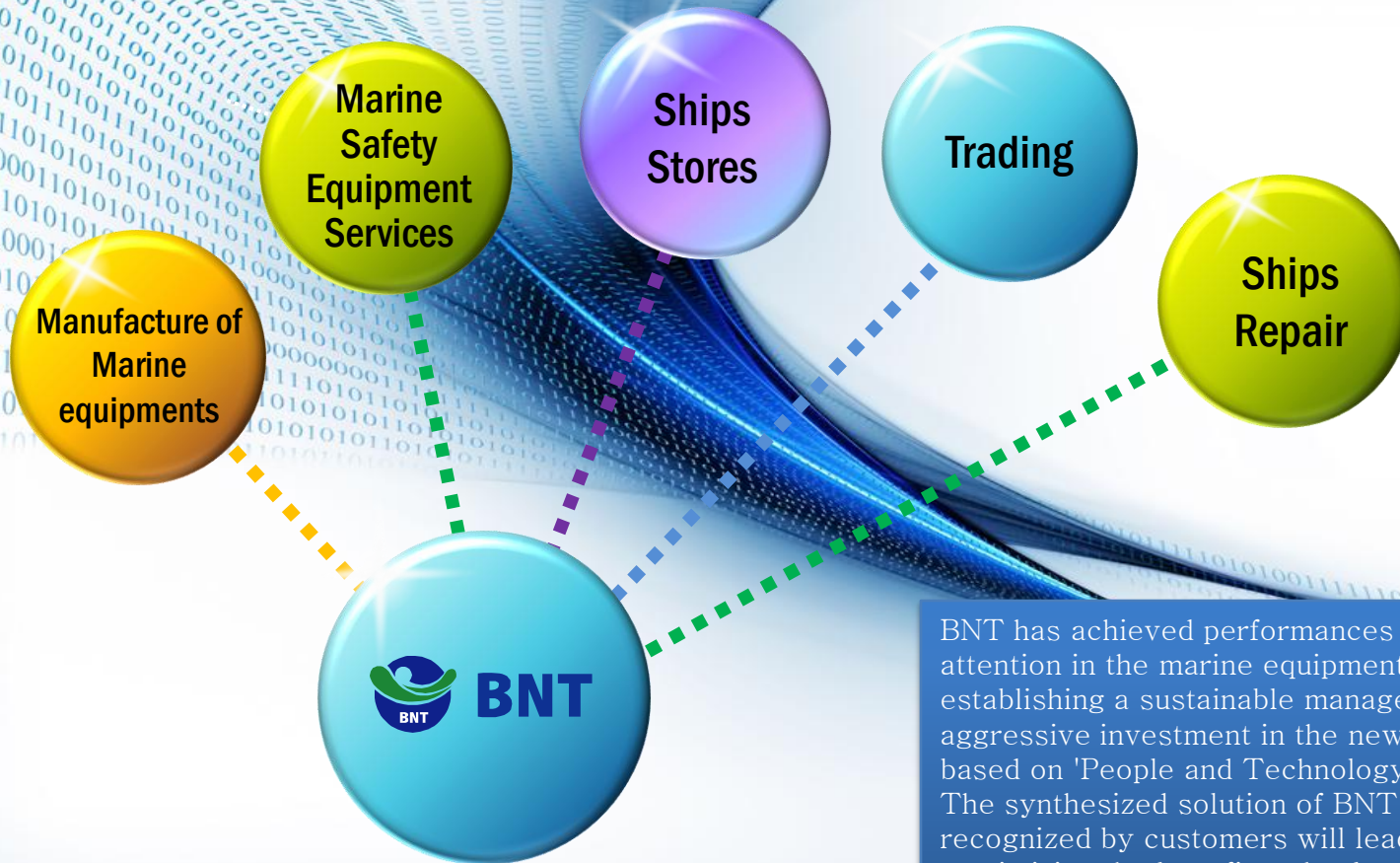
2) History

- Nov. 2010 Establishment of BNT CO., LTD (495-6, Gupyeong-dong, Saha-gu, Busan, Korea)
- Mar. 2011 Registration of ship spare parts providing service -Domestic & International products
(Busan Customs Registration No. 030W354)
- Mar. 2011 Registration of shipping agency service (Busan Customs Registration No. 030A616)
- May. 2012 Establishment of ship spare parts manufacturing plant
- May. 2013 Establishment of The second Gupyeong plant for vessel safety equipment
- Jun. 2013 ISO 9001 Application (ABS)
- Jul. 2013 Acquisition of RS CERTIFICATE for vessel safety equipment

1. About Company



3) BUSINESS AREA

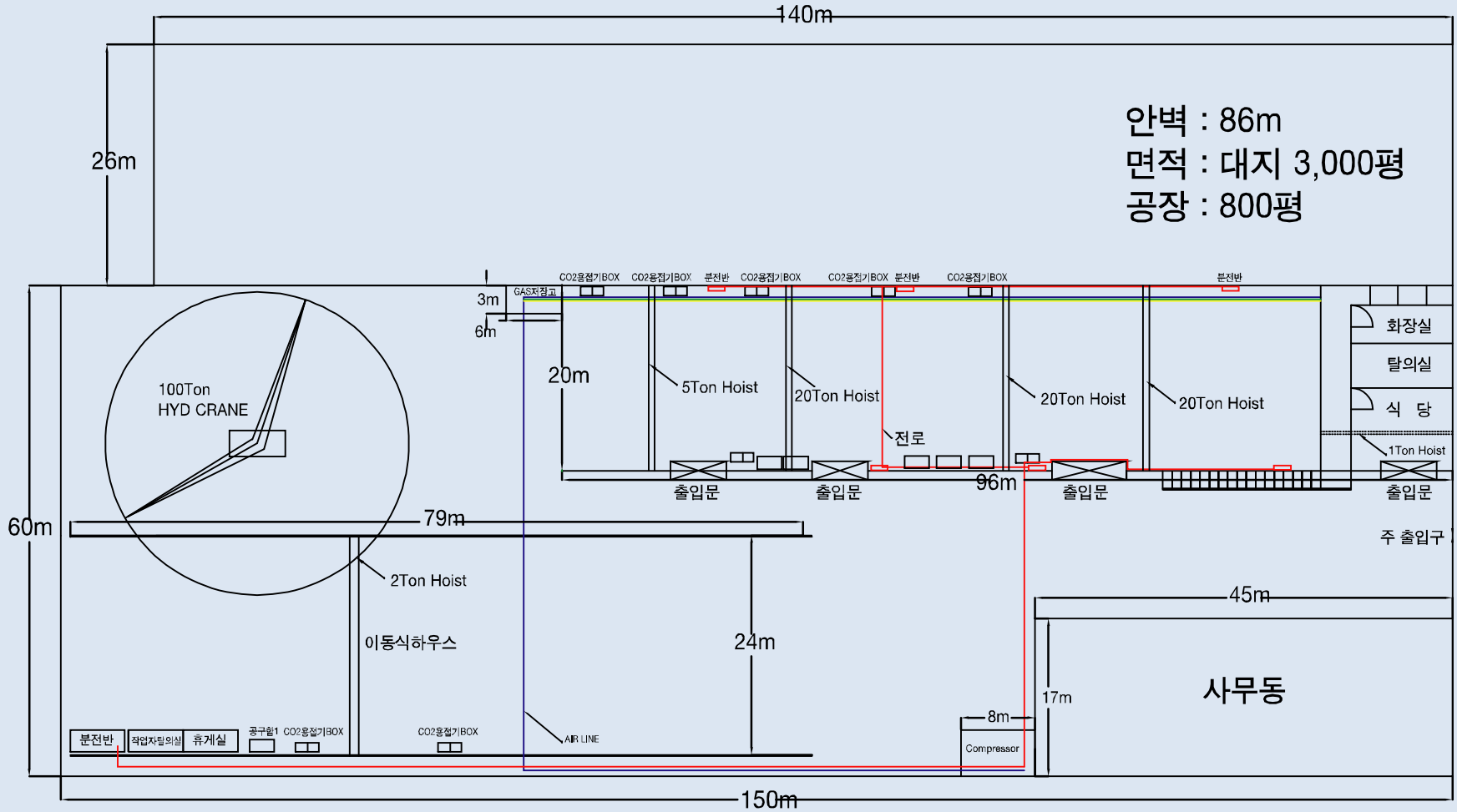


BNT has achieved performances worthy of close attention in the marine equipment fields, and is establishing a sustainable management system with aggressive investment in the new business field based on 'People and Technology.' The synthesized solution of BNT that has been recognized by customers will lead us to success by maximizing the benefit and value of customers.

1. About Company



4) Factory Layout



1. About Company



5) EQUIPMENTS-I

ITEM	CAPACITY	AMOUNT	ITEM	CAPACITY	AMOUNT
AIR COMPRESSOR	100 HP	1	CO2 Welding Machine	500 A	26
CRAWELER CRANE	100 Ton	1	ARC Welding Machine	15 KW	20
HYD CRANE	180 Ton	1	LATHE		5
HOIST CRANE	1 Ton	1	TIG Welding Machine	500A	5
HOIST CRANE	2 Ton	1	INVERTER TIG Welding Machine		1
HOIST CRANE	3 Ton	1	GOUGING MACHINE	1000A	2
HOIST CRANE	5 Ton	2	GAS CUTTING NACHINE		20
HOIST CRANE	20Ton	1	RE-MACHINE		2
CNC LATHE		4	FORKLIFT	7 Ton	2
NC CUTTING NACHINE		2	FORKLIFT	5 Ton	1
FEEDER		68	Abrasive cut-off machine	380V / 3	2
1Ton Truck	1Ton	4	Welding Machine BOX		14
SIGNAL LEVEL		3	APS		2

1. About Company



5) EQUIPMENTS-II

Lathe 900*6000



Lathe 460*1500



CNC Lathe 10" 4set



Lathe 580*2000



Milling 5



Lathe 720*3000



RD-Machine 1600



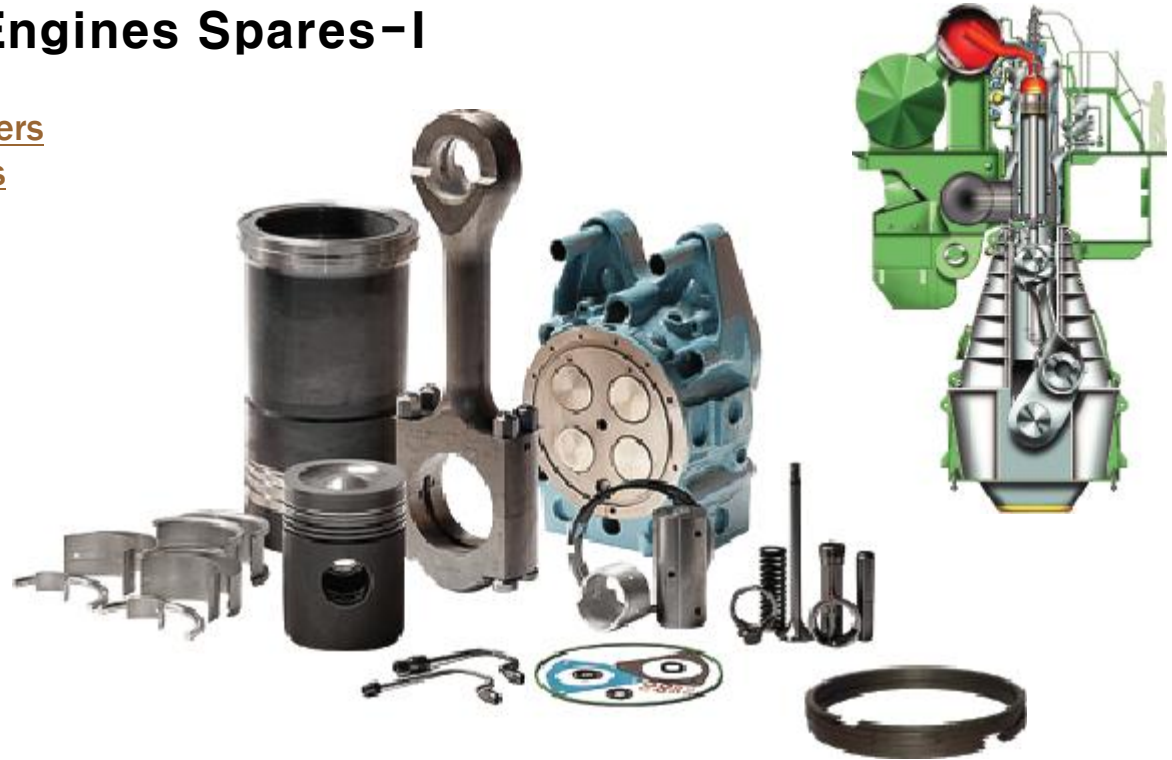
Drilling Machine 3Set





1) Main & Auxiliary Engines Spares-I

- Cylinder liners, heads and covers
- Piston crowns, skirts and rings
- Connecting roads
- Crank shafts
- Bearings
- Valves
- Nozzles
- Gaskets
- Fuel injection systems
- Fuel oil pumps
- Lubricating oil systems
- Air coolers
- Governors
- Auxiliary drives
- Control systems
- Manifolds
- Combustion chambers
- Gear boxes
- Stuffing boxes
- Couplings



2. Business Area



1) Main & Auxiliary Engines Spares-II

Products



2. Business Area



2) Purifier Production-I

It has always been our effort to maintain condition and quality of our spare parts according to World Standards. Regular inspections are carried out by our specially trained staff with necessary testing equipment and manned by our technical team who are totally dedicated to inspection of our products.



2. Business Area



2) Purifier Production-II

Complete bowl Assembly
Clarifier bowl / Purifier bowl
Worm Wheel
Worm Wheel Shaft
Feed Pump / Spanner Set
"O" Rings and Gasket Purifier:



mitsubishi	SJ-700,2000,3000,4000,6000,8000 SJ-10T,11T,15T,16T,20T,25T,30T,40T,60T SJ-10F,15F,30F,40F,50F,60F,80F,100F SJ-10G/GH,20G,30G,40G,50G,60G,70G,100G,120G,150G
ALFA LAVAL	MAB 104,204,205,207,102,103 SERIES MAPX 204,205,207,309 SERIES MOPX 207,209,210 SERIES



3) Spares for most common marine pumps;

- Air driven pumps
- Ballast pumps
- Bilge pumps
- Chemical pumps
- Cirkulation pumps
- Cooling water pumps
- Diaphragm pumps
- Diesel oil pumps
- Dosing pumps
- Drum pumps
- Eccentric screw pumps
- Ejector pumps
- Feed water pumps
- Fuel pumps
- Gear wheel pumps
- High pressure pumps
- Horizontal pumps
- Hydraulic pumps

- Injection pumps
- Jetting pumps
- Lub Oil pumps
- Magnetic driven pumps
- Piston pumps
- Sludge pumps
- Submersible pumps
- Triplex pumps
- Vacuum pumps

TAIKO / NANIWA / SHINKO KINZOKU(SHINKO) / TEIKOKU / HEISHIN / SHINSHIN / SASAKURA / ISHII / KAWASAKI / IHI





4) SAFETY EQUIPMENT

BNT Safety is committed to providing premier quality marine safety products tested and proven by world leaders in marine safety technologies. Our dedicated customer service and repair personnel will ensure that your time on the water is safe and enjoyable. BNT is your one stop marine safety shop.





4) SAFETY EQUIPMENT



[Complete Servicing for-
Swift Water Rescue Boats](#)
[Commercial Rescue Boats](#)
[Fire Rescue boats](#)
[Law Enforcement Boats](#)
[Military and Government Boats](#)
[Recreational Inflatables & RIBs](#)
[Commercial Inflatables & RIBs](#)
[Recreational Life Rafts](#)
[Commercial Life Rafts](#)

BNT Safety Repairs and Inspections

Servicing a life raft is no place for amateur or improvised solutions.

With a large state-of-the-art approved repair facility,

BNT can provide the level of quality inspection and service that you can depend on. Our services are approved by all major maritime authorities including the USCG, ABS, Lloyds, DMV, NK and BV.

BNT Safety requires that all marine safety personnel are regularly trained and certified to follow each specific manufacturers service procedures.

As a result, we are authorized to service all major brands of life rafts and inflatable crafts. Air-Sea Safety provides prompt and convenient dockside service.

To ensure efficiency in your commercial operation, BNT Safety will greet your ship on arrival and return most equipment within 12-24 hours.

2. Business Area



5) Ship Repair

Hull / Engine / Piping / Outfitting



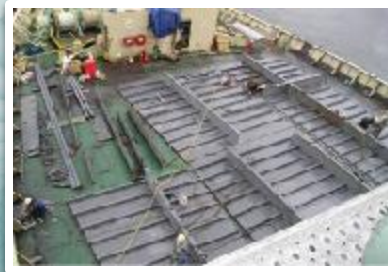
2. Business Area



5) Ship Repair-2

Reconstruction & Remodeling

Passenger



Fish Factory



Electric



Gallery





***Thank You,
Always with you!***

